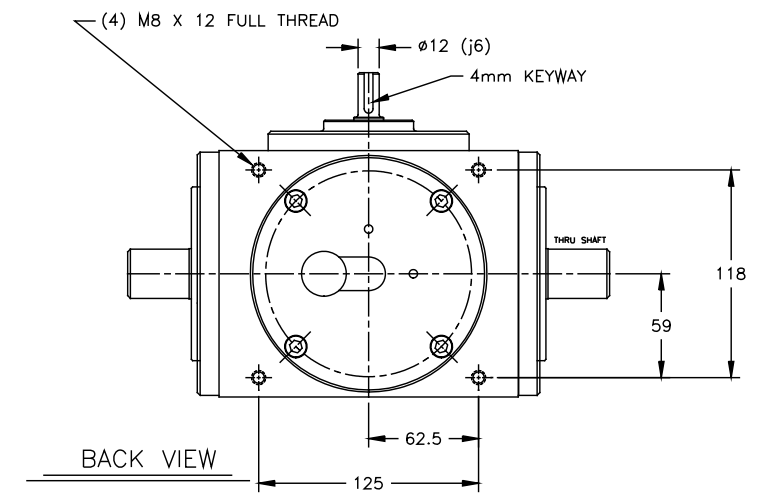
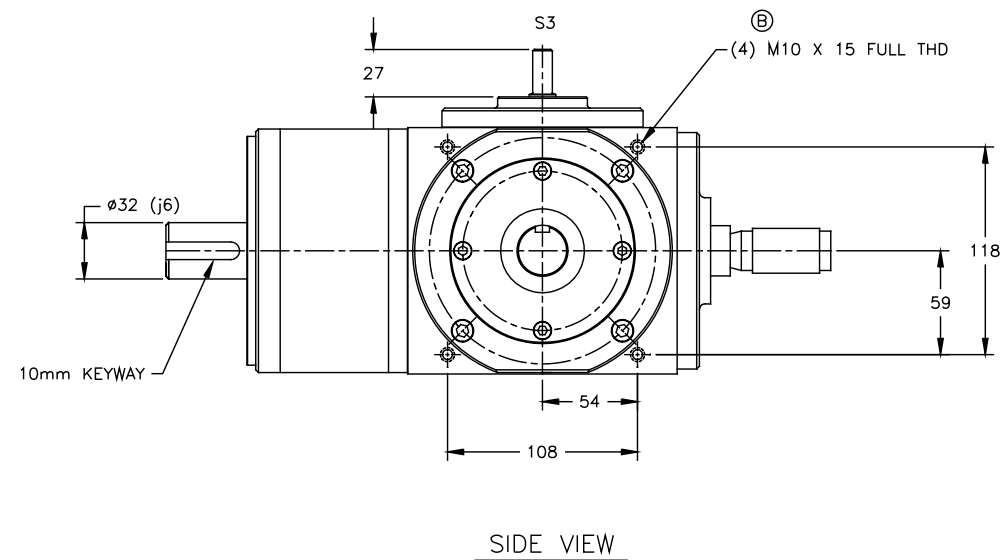
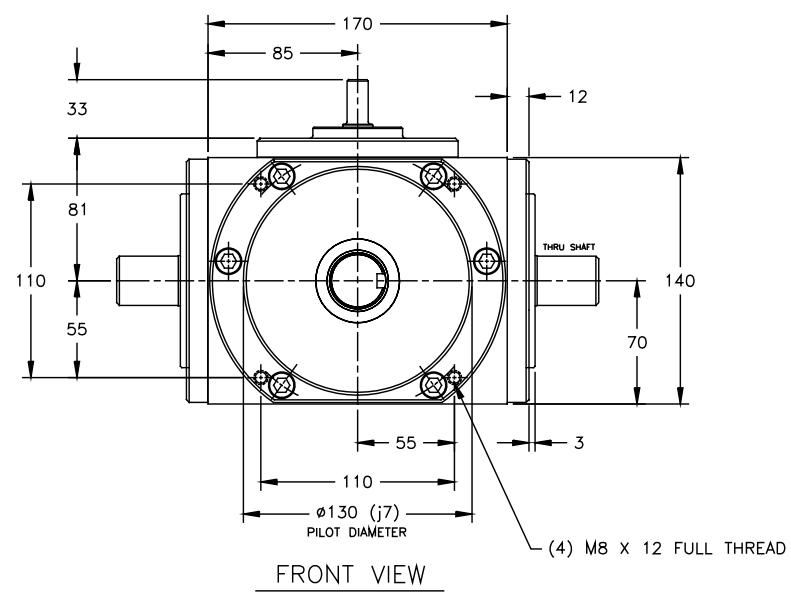


- NOTE:
- LUBRICATION:
 - TYPE: MOBILGEAR 627 (OR EQUIVALENT)
 - CAPACITY: 739 mL
 - CHANGE: FIRST @ 150 HR.
 - INTERVAL: SUBSEQUENT @ 2000 HR. (UNDER NORMAL OPERATING CONDITIONS)
 - OPERATING TEMPERATURE: 93°C MAX.
 - WEIGHT: 34 kg
 - S3 TO S2 RATIO: 80:1
 - S1 TO S2 RATIOS: 1:1
 - RATED TORQUE @ THRU SHAFT SPEED:
 - 63.3 N-m @ 2000 RPM
 - 70.0 N-m @ 1750 RPM
 - 84.7 N-m @ 1000 RPM
 MAX. E-STOP TORQUE = 152 N-m



RATIO	SHIFTER ENGAGEMENT	PART NUMBER
S1:S2	MULTI-POSITION	500RD1:1M00SA1
1:1	SINGLE-POSITION	500RD1:1M00TA1

UNLESS OTHERWISE SPECIFIED				DRAWN BY:	DATE:	CONIC SYSTEMS, INC. HARMONIC DIFFERENTIALS & CONTROL SYSTEMS Eleven Rebel Lane, Port Jervis N.Y. 12771
DO NOT SCALE DRAWING • BREAK ALL SHARP EDGES •				J ARENDT	11/05/98	
				CHECK BY:	DATE:	ASM/PART DESCRIPTION: INSTALLATION: MODEL 500 RIGHT ANGLE METRIC SHIFTER
				J ARENDT	11/05/98	
				APPROVED BY:	DATE:	REPLACES: 500-RD1:1M00?A1 500RD1:1M00?A1
				MATERIAL:		REV: C
				FINISH:		
DIMENSIONS:				SIZE: SCALE:		DWG: IM5C019-D
TOL. MM INCHES				1:2		
.X ± — ± —						
.XX ± — ± —						
.XXX ± — ± —						
FRACTIONAL ± — ± —						
ANGULAR ± 1/2°						
FINISH: 63						
REVISIONS						
C	12/02/00	PART NUMBER CHANGE, 75 WAS 68	JA			
B	07/17/00	DRAIN PLUGS CHANGED; M10 WAS M8 TAP	JA			
A	05/15/00	THRU SHAFT KEY WAS 5mm	JA			
SYM	DATE	CHANGE	CHNG	APPR		