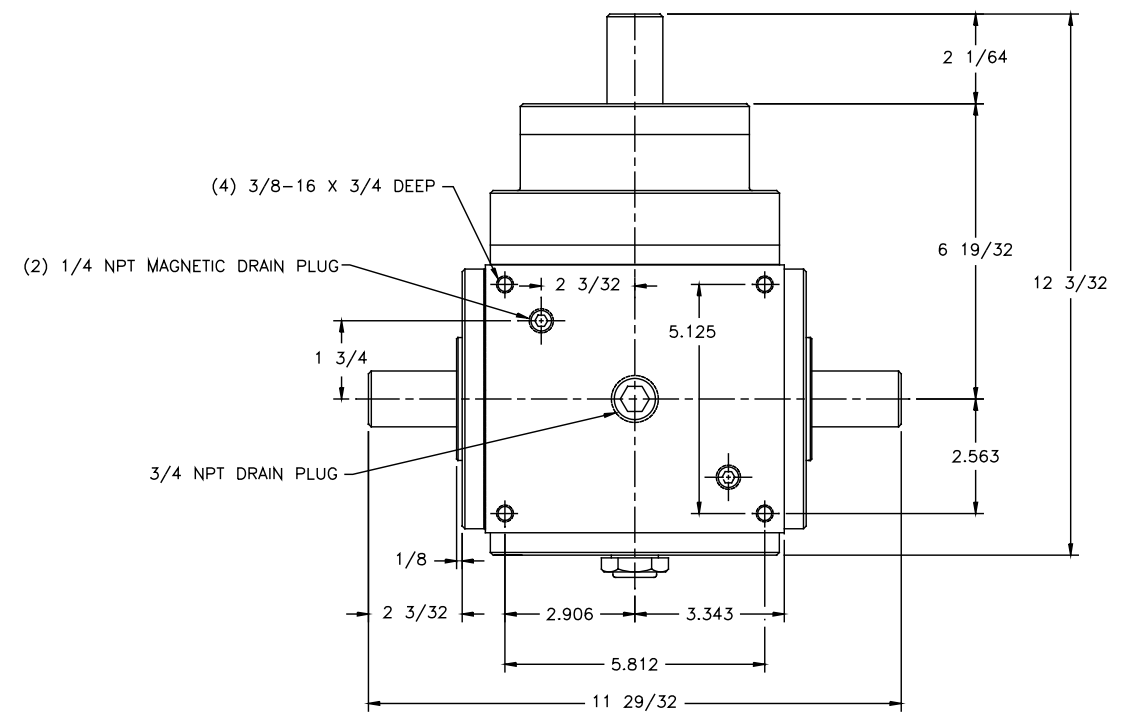
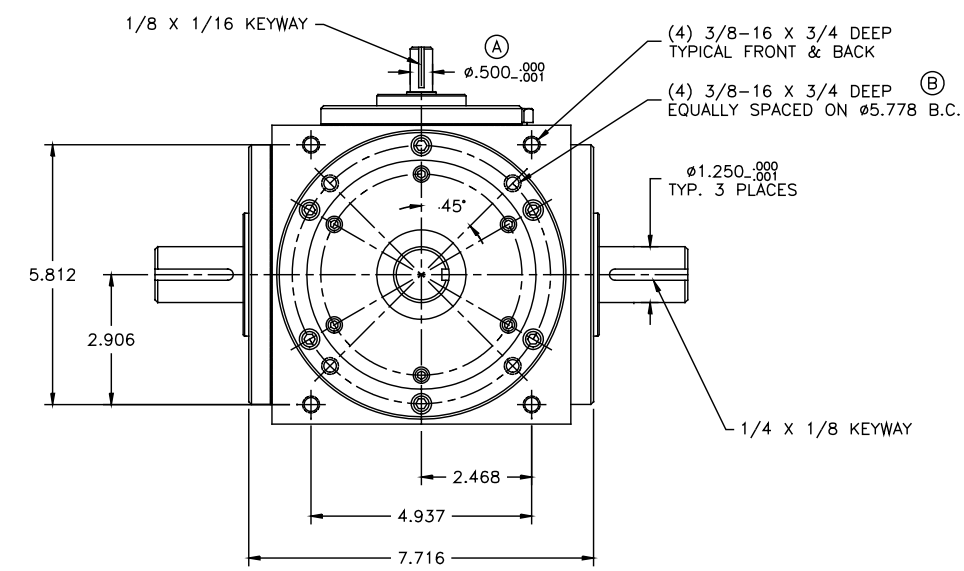


TOP VIEW

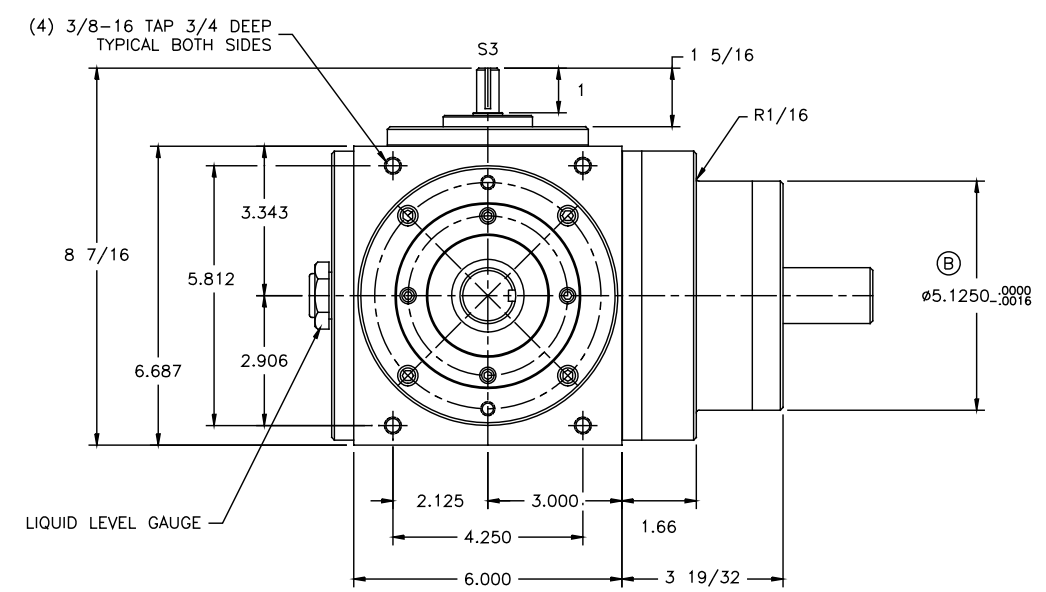


BOTTOM VIEW

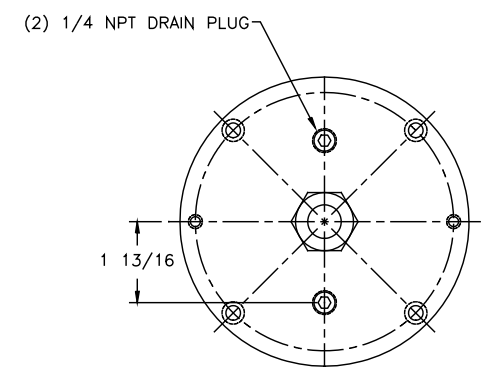
- NOTE:
- LUBRICATION:
 - TYPE: MOBILGEAR 627 (OR EQUIVALENT)
 - CAPACITY: 50 OZ.
 - CHANGE: FIRST @ 150 HR.
 - INTERVAL: SUBSEQUENT @ 2000 HR. (NORMAL OPERATING CONDITIONS)
 - OPERATING TEMPERATURE: 200°F MAX.
 - WEIGHT: 78 lbs.
 - S3 TO S2 RATIO: 80:1
 - S1 TO S2 RATIOS: 1:1, 2:1
 - RATED TORQUE @ THRU SHAFT SPEED:
 - 560 lb-in @ 2000 RPM
 - 620 lb-in @ 1750 RPM
 - 750 lb-in @ 1000 RPM
 - MAX. E-STOP TORQUE = 1350 lb-in



FRONT VIEW



SIDE VIEW



BACK COVER

RATIO	PINION	PART NUMBER
1:1	RIGHT	500RD1:1S02RA1
2:1	RIGHT	500RD2:1S02RA1
1:1	LEFT	500RD1:1S02LA1
2:1	LEFT	500RD2:1S02LA1

UNLESS OTHERWISE SPECIFIED				DATE: 10/05/97	CONIC SYSTEMS, INC. <small>HARMONIC DIFFERENTIALS & CONTROL SYSTEMS</small> <small>Eleven Rebel Lane, Port Jervis N.Y. 12771</small>	
DO NOT SCALE DRAWING				DATE: 10/05/97		
BREAK ALL SHARP EDGES				DATE: 10/05/97	ASM/PART DESCRIPTION: INSTALLATION: MODEL 500 RIGHT ANGLE STANDARD	
DIMENSIONS:				TOL.	MM	INCHES
.X				±	—	±.015
.XX				±	—	±.010
.XXX				±	—	±.005
INCHES				FRACTIONAL	±	1/32
ANGULAR				±	1/2°	
FINISH: 63						
C 08/02/00 DRAIN/FILL PLUGS CHANGED JA B 04/28/98 3/8-16 TAPS ADDED, DIM WAS 5.118 JA A 03/12/98 SHAFT WAS #438 JA SWM DATE CHANGE CHNG APPR				REVISIONS		MATERIAL: 500-080-RA-1S02 500-080R?S02?A
SIZE: SCALE: 1:2 DWG: IM5C005-D REV: C						