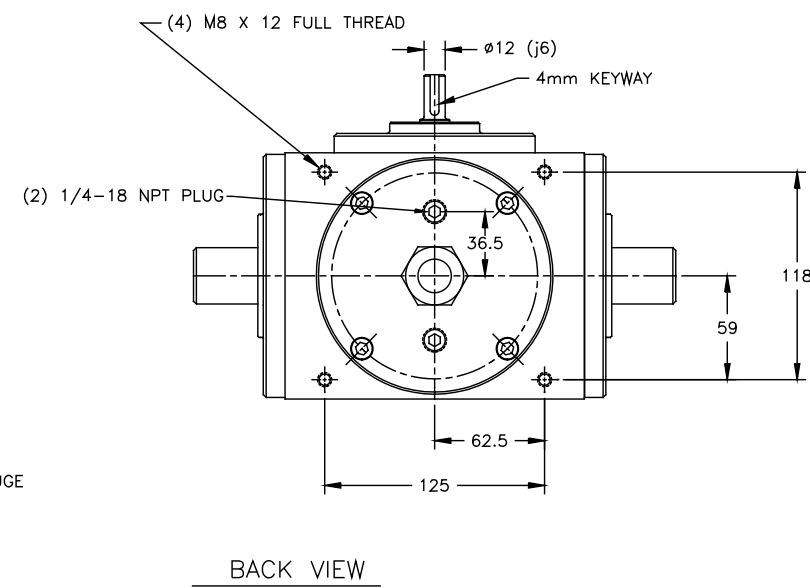
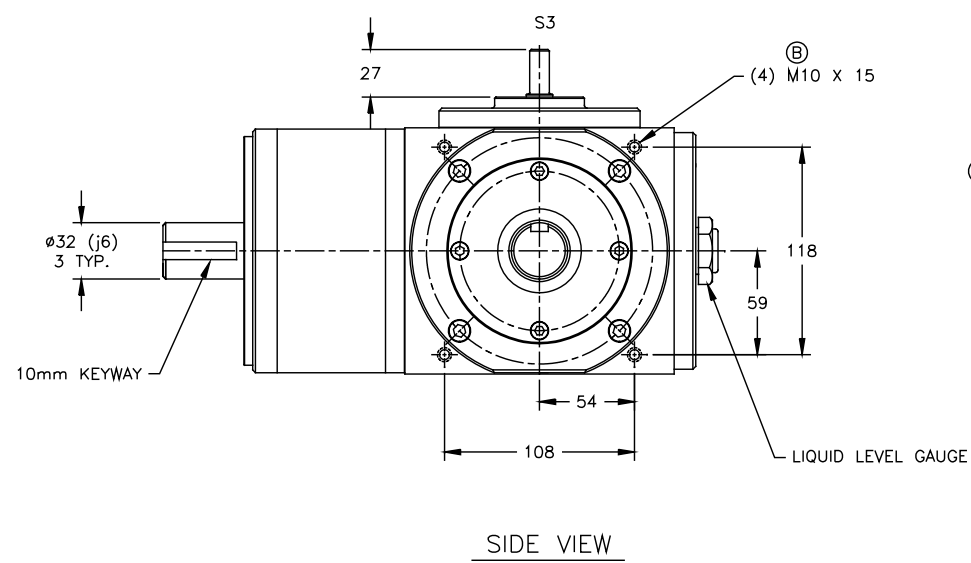
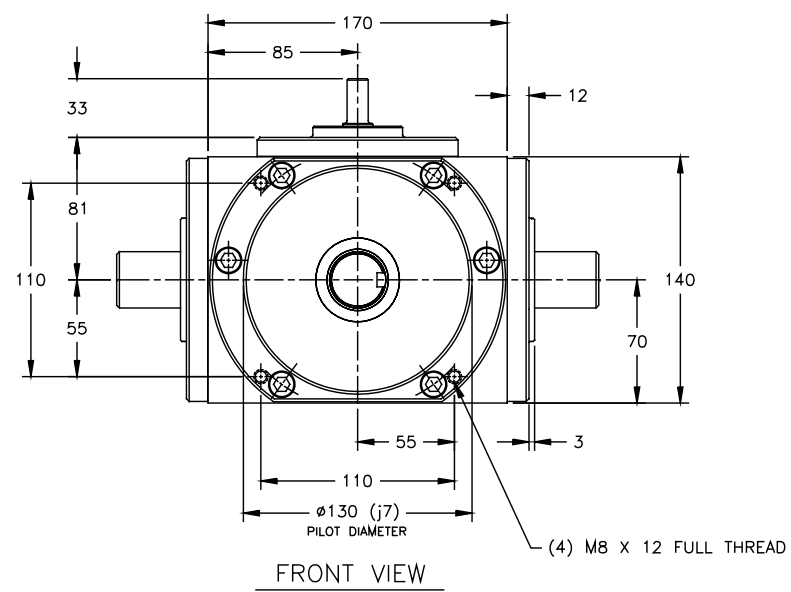


- NOTE:
- LUBRICATION:
 - TYPE: MOBILGEAR 627 (OR EQUIVALENT)
 - CAPACITY: 739 mL
 - CHANGE: FIRST @ 150 HR.
 - INTERVAL: SUBSEQUENT @ 2000 HR. (UNDER NORMAL OPERATING CONDITIONS)
 - OPERATING TEMPERATURE: 93°C MAX.
 - WEIGHT: 34 kg
 - S3 TO S2 RATIO = 80:1
 - S1 TO S2 RATIOS: 1:1, 2:1
 - RATED TORQUE @ THRU SHAFT SPEED:
 - 63.3 N-m @ 2000 RPM
 - 70.0 N-m @ 1750 RPM
 - 84.7 N-m @ 1000 RPM
 - MAX. E-STOP TORQUE = 152 N-m



RATIO		
S1:S2	PINION	PART NUMBER
1:1	RIGHT	500RD1:1M00RA1
2:1	RIGHT	500RD2:1M00RA1
1:1	LEFT	500RD1:1M00LA1
2:1	LEFT	500RD2:1M00LA1

REV	DATE	CHANGE	CHNG	APPR
B	07/17/00	DRAIN PLUGS CHANGED; M10 WAS M8 TAP	JA	
A	08/18/98	DIMENSION WAS 291mm	JA	

UNLESS OTHERWISE SPECIFIED			DO NOT SCALE DRAWING	BREAK ALL SHARP EDGES
DIMENSIONS:	TOL.	MM	INCHES	
MM	.XX	±	±	
INCHES	.XXX	±	±	
	FRACTIONAL	±	±	
	ANGULAR	±	1/2°	
FINISH	63			

DRAWN BY: J ARENDT	DATE: 10/05/97	CONIC SYSTEMS, INC. <small>HARMONIC DIFFERENTIALS & CONTROL SYSTEMS</small> <small>Eleven Rebel Lane, Port Jervis N.Y. 12771</small>
CHECK BY: J ARENDT	DATE: 10/05/97	
MATERIAL:		ASSEMBLY DESCRIPTION:
FINISH:		INSTALLATION: MODEL 500 RIGHT ANGLE METRIC
REPLACES:	500-080-R?M00?A	ASM/PART:
SIZE: SCALE:	DWG: IM5C004-D	500RD?:?M00?A1
REV: B		