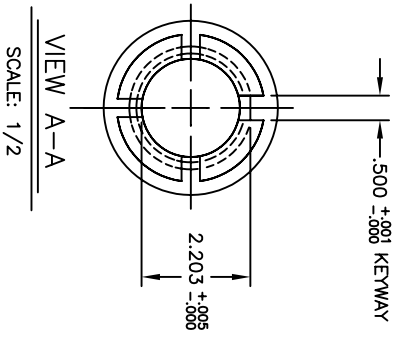


(6X) 5/16-18UNC-2B X .63 DEEP  
EQUALLY SPACED ON Ø5.625 BC

(4X) 1/4-20UNC-2B X .50 DEEP  
EQUALLY SPACED ON Ø1.812 BC



UNLESS OTHERWISE SPECIFIED		FINISH: EN	DATE: 08/02/96
DO NOT SCALE DRAWING *		ORDER: V GENOVESE	DATE: 08/02/96
* BREAK ALL SHARP EDGES *		APPROVED BY:	
DIMENSIONS	TOL.	MM	INCHES
X	±	±	±
XXX	±	±	±
INCHES	FRACTIONAL	±1/64	FINISH:
MM	ANGULAR	±1/2°	
FINISH	TEXT		
SIZE: C	SCALE: 1:1	DWG: IM40001-C	REV:
<b>CONIC SYSTEMS, INC</b> AERONAUTICAL & CONIC SYSTEMS Eleven Rebel Lane, Port Jervis, N.Y. 12771		ASU/PART: 40-XXX-SM	
MODEL 40-SM BORE = Ø2.000 REPLICES:			

SYN	DATE	CHANGE	CHNG	APPR
		REVISIONS		