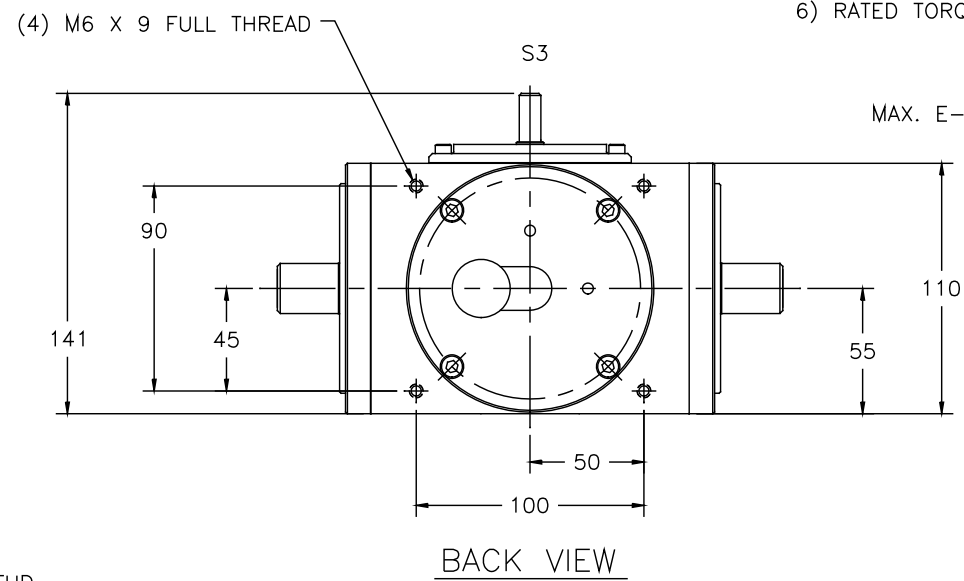
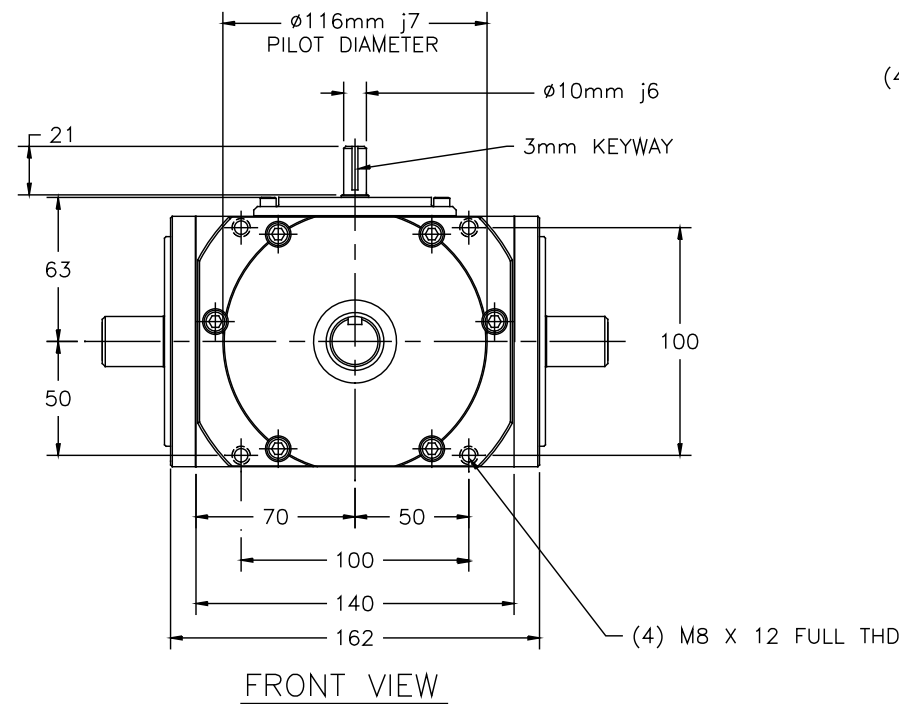


- NOTE:
- LUBRICATION: TYPE: MOBILGEAR 627 (OR EQUIVALENT)
CAPACITY: 580 mL
CHANGE INTERVAL: FIRST @ 150 HR. SUBS. @ 2000 HR.
 - OPERATING TEMPERATURE: 93°C MAX.
 - WEIGHT: 20 kg
 - S3 TO S2 RATIO: 80:1
 - S1 TO S2 RATIOS: 1:1, 2:1
 - RATED TORQUE @ THRU SHAFT SPEED:
34 Nm @ 2000 RPM
42 Nm @ 1750 RPM
50 Nm @ 1000 RPM
MAX. E-STOP TORQUE = 127 Nm



RATIO	SHIFTER ENGAGEMENT	PART NUMBER
S1:S2	MULTI-POSITION	300RD1:1M00SA1
1:1	SINGLE-POSITION	300RD1:1M00TA1

SYM	DATE	CHANGE	CHNG	APPR
REVISIONS				

UNLESS OTHERWISE SPECIFIED			DRAWN BY: J ARENDT		DATE: 03/07/00	
DO NOT SCALE DRAWING • BREAK ALL SHARP EDGES •			CHECK BY: J ARENDT		DATE: 03/07/00	
DIMENSIONS			TOL.		MATERIAL:	
MM			.X ± .030		FINISH:	
INCHES			.XX ± .010		THIRD ANGLE PROJECTION	
			.XXX ± .005		SCALE: 1:2	
			FRACTIONAL ± 1/64		DWG: IM3C007-C	
			ANGULAR ± 1/2°		REV:	

CONIC SYSTEMS, INC
HARMONIC DIFFERENTIALS & CONTROL SYSTEMS
Eleven Rebel Lane, Port Jervis N.Y. 12771

ASM/PART DESCRIPTION:
MODEL 300MRAS
METRIC SHIFTER
REPLACES: 300-080R1M00SA
ASM/PART: 300RD1:1M00?A1