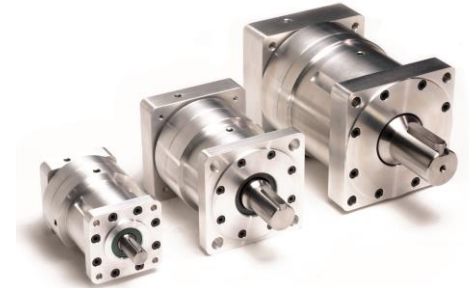


LT3 Gearheads

Lifetime Series Harmonic Servo Gearheads

Features

- Lifetime zero backlash
- Ultra-high repeatability (less than 10 arc-sec)
- High positional accuracy (± 1.5 arc-min standard)
- NEMA 34, and metric
- Single stage, high reduction ratios from 50 to 160:1
- High output torque in a compact gearhead
- Low noise and heat generation
- High efficiency, torsional stiffness and torque-to-weight ratio



Standard Specifications

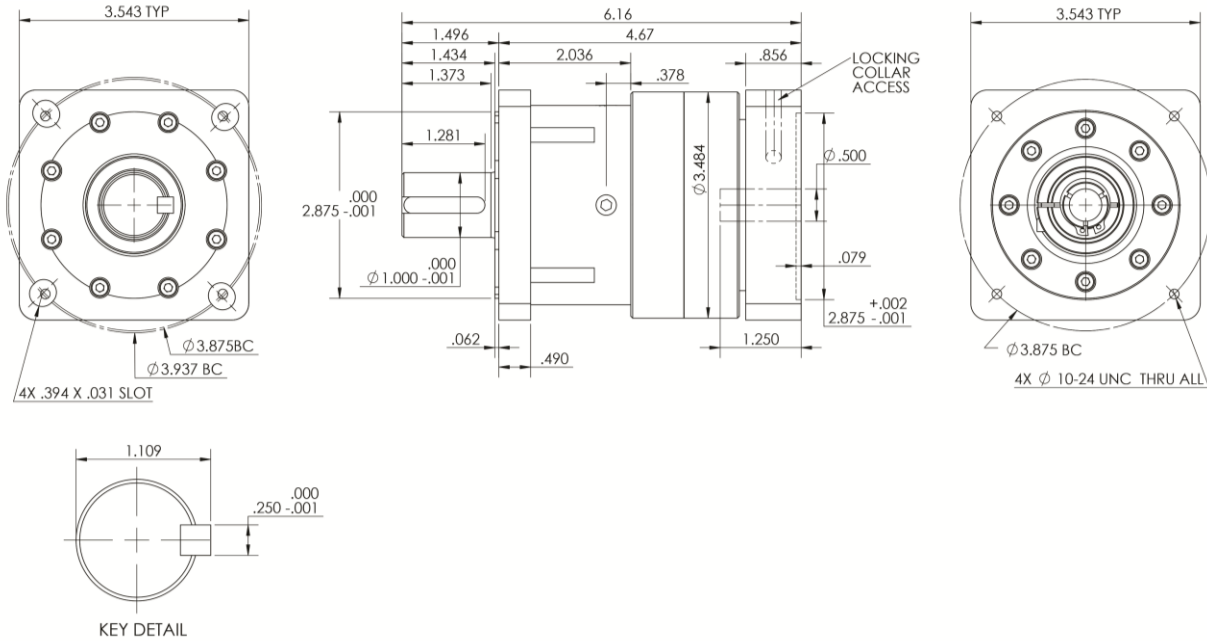
Ratio		50	80	100	120	160
Nominal Output Torque ¹	Nm	40	40	50	50	50
Maximum Output Torque ²	Nm	80	80	100	100	100
Nominal Input Speed ³	rpm	3000				
Maximum Input Speed ⁴	rpm	5600				
Max. Radial Load ⁵	N	2230				
Max. Axial Load ⁶	N	3717				
No-Load Starting Torque ⁷	Ncm	14	7	7	6	6
No-Load Back Driving Torque ⁸	Nm	7	7.2	8.5	9	11.3
Service Life ⁹	hrs	25000				
Torsional Rigidity ¹⁰	Nm/arc-min	24				
Repeatability	arc-sec	± 10				
Positional Accuracy	arc-sec	± 90				
Backlash	arc-sec	0				
Moment of Inertia	kgcm ²	0.506				
Noise Level	dB(A)	< 67				
Protection Class	-	IP64				
Permitted Housing Temp.	°C	90				
Permitted Ambient Temp.	°C	0 - 40				
Lubrication ¹¹	-	Permanent				
Weight ¹²	kg	2.6				

1) Rated torque at 3,000 rpm input for an average life of 25,000 hours
 2) Exceeding the maximum output torque limit may immediately damage the drive
 3) Input speed at rated output torque for an average life of 25,000 hours
 4) The maximum intermittent input speed
 5) At key center line, calculated at 100 rpm output speed and nominal output torque
 6) At end of output shaft, calculated at 100 rpm output speed and nominal output

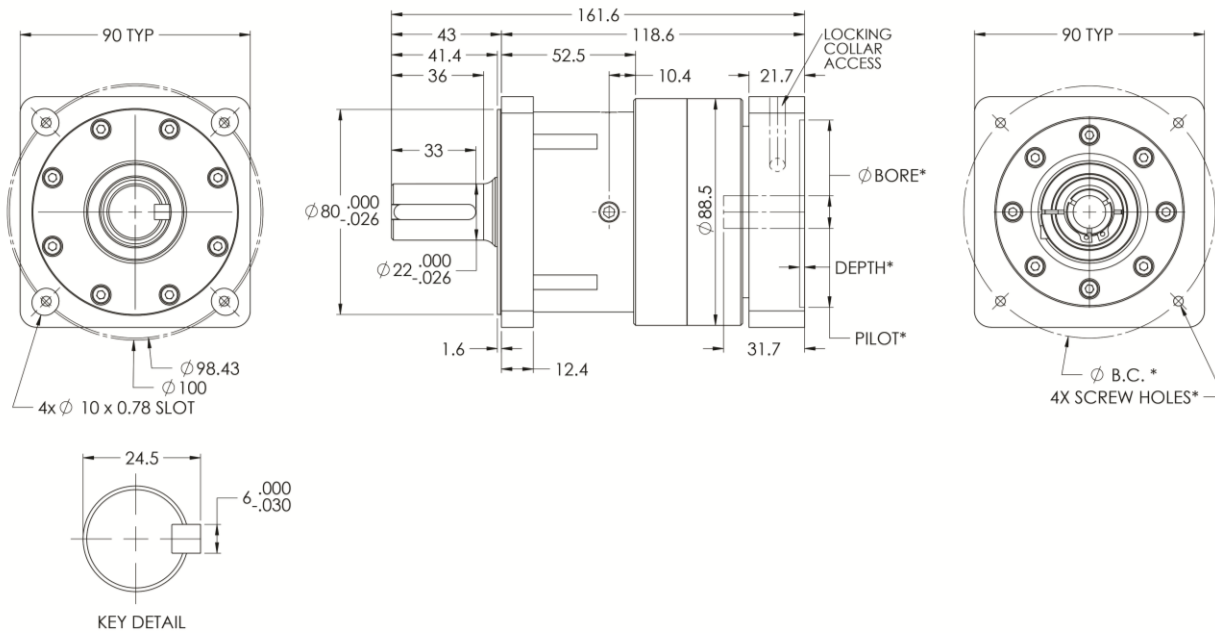
7) Minimum input torque required to turn the output shaft with no load
 8) Minimum torque, if applied to the output shaft, that will cause the unit to back drive
 9) Average life at nominal load and input speed
 10) Torsional rigidity at nominal torque
 11) Mobil Beacon 325 grease, synthetic oil available on request
 12) Weight may vary slightly dependent upon adapter options

LT 3 Dimensions

NEMA 34



Metric



Ordering Codes

