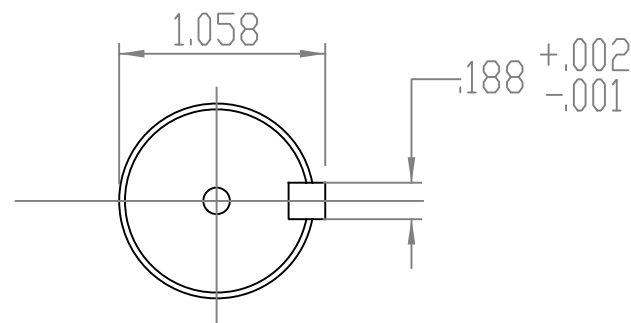
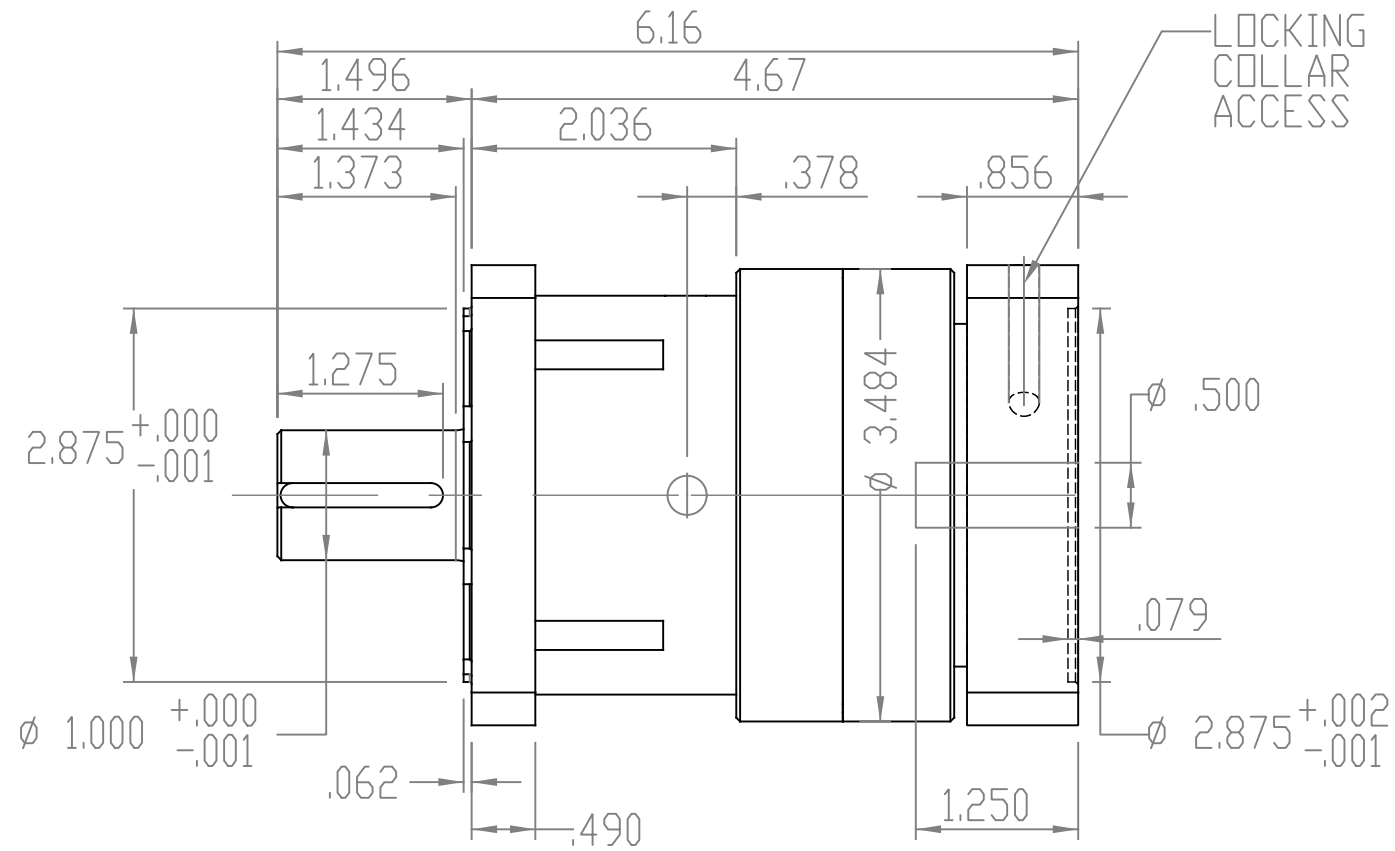


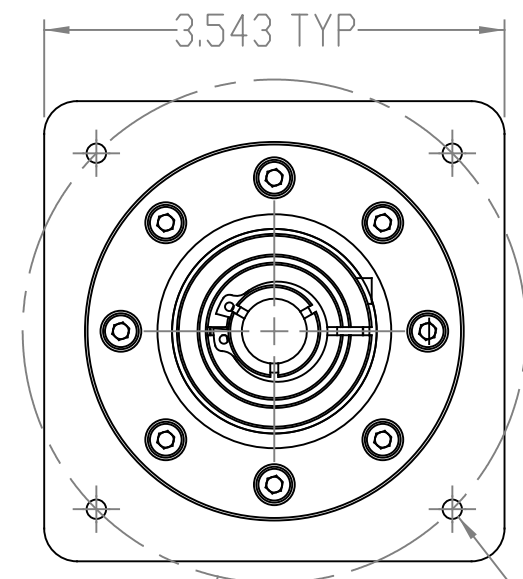
3.543 TYP  
 $\phi$  3.875 BC  
 $\phi$  3.937 BC  
 4X $\phi$  .394 X .031 SLOT



KEY DETAIL



LOCKING COLLAR ACCESS



3.543 TYP  
 $\phi$  3.875  
 4X $\phi$  10-24 UNC THRU ALL

PROPRIETARY AND CONFIDENTIAL  
 THE INFORMATION CONTAINED IN THIS DRAWING IS THE SOLE PROPERTY OF TETRAGON LABS, INC. ANY REPRODUCTION IN PART OR AS A WHOLE WITHOUT THE WRITTEN PERMISSION OF TETRAGON LABS IS PROHIBITED.

UNLESS OTHERWISE SPECIFIED		NAME	DATE
DIMENSIONS ARE IN INCHES	DRAWN	MH	06/06/17
TOLERANCES:	ENG APPR.	VG	09/14/17
FRACTIONAL $\pm 1/16"$	MFG APPR.	KD	2/26/18
ANGULAR: MACH $\pm .5^\circ$ BEND $\pm 2^\circ$	CUSTOMER		
TWO PLACE DECIMAL $\pm .010$	COMMENTS:		
THREE PLACE DECIMAL $\pm .005$			
BREAK ALL SHARP EDGES			
MATERIAL			
FINISH			
DO NOT SCALE DRAWING			

CONIC SYSTEMS HARMONIC GEARING & CONTROLS 11 REBEL LANE, PORT JERVIS, NY 12771		
LT 3 SERVO GEARHEAD NEMA 34 MOUNT		
SIZE	DWG. NO.	REV
B	LT-3-N34-001	—
SCALE: 2:3	WEIGHT:	SHEET 2 OF 3