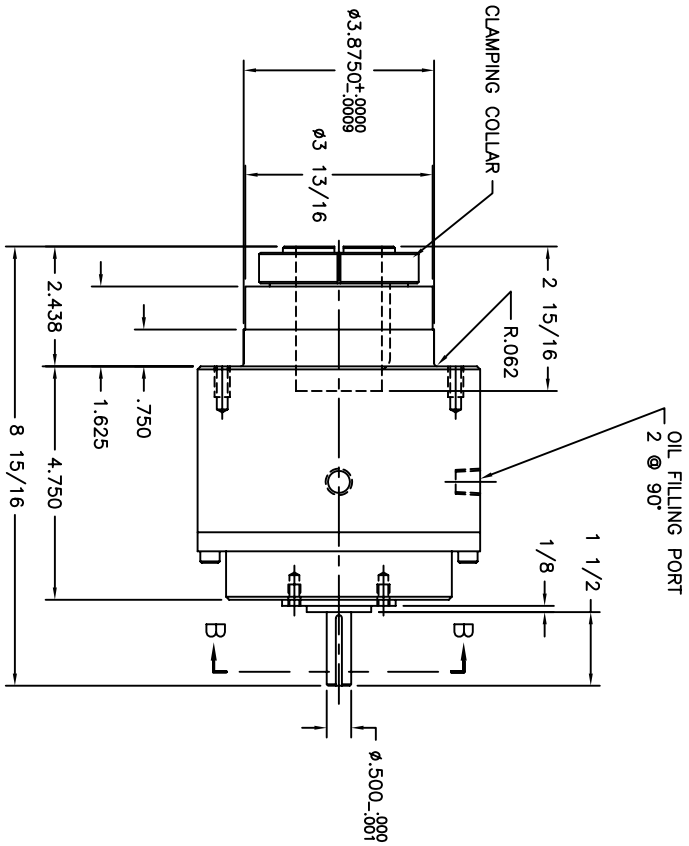
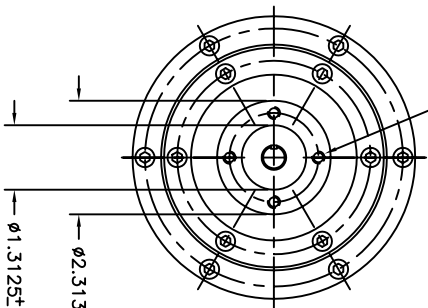


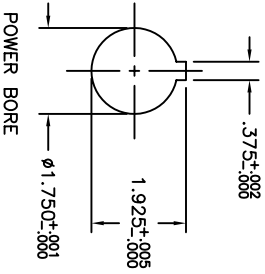
(6) 5/16-18 X 5/8 DEEP
EQUALLY SPACED ON A Ø4.750 B.C.



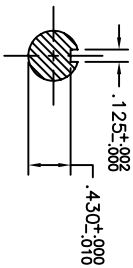
OIL FILLING PORT
2 @ 90°



(4) 1/4-20 X 7/16 DEEP
EQUALLY SPACED ON Ø1.313 B.C.



POWER BORE



SECTION B-B
SCALE = 1:1

REV	DATE	CHANGE	CHKD	APPR

UNLESS OTHERWISE SPECIFIED		FINISH	
DO NOT SCALE DRAWING	* BREAK ALL SHARP EDGES *		
DIMENSIONS	TOL.	MM	INCHES
X	±	±	±
XXX	±	±	±
FRACTIONAL	±	±	±
ANGULAR	±	±	±
FINISH			

DATE:	05/10/94	DESIGNER:	JAC
DATE:	10/02/97	APPROVED:	J ARENDT
DATE:		MATERIAL:	

CONIC SYSTEMS, INC	
MEMPHIS INTERNATIONAL & CONIC SYSTEMS	
Eleven Rebel Lane, Port Jervis N.Y. 12771	
ASST/PART DESCRIPTION:	
MODEL 32-SM; INSTALLATION	
SHAFT MOUNT, BORE=Ø1 3/4	
REPLACES:	
32-SM	ASST/PART: 32-XXX-SM
SIZE: SCALE: 1:2	DWG: IM32000-C
REV:	