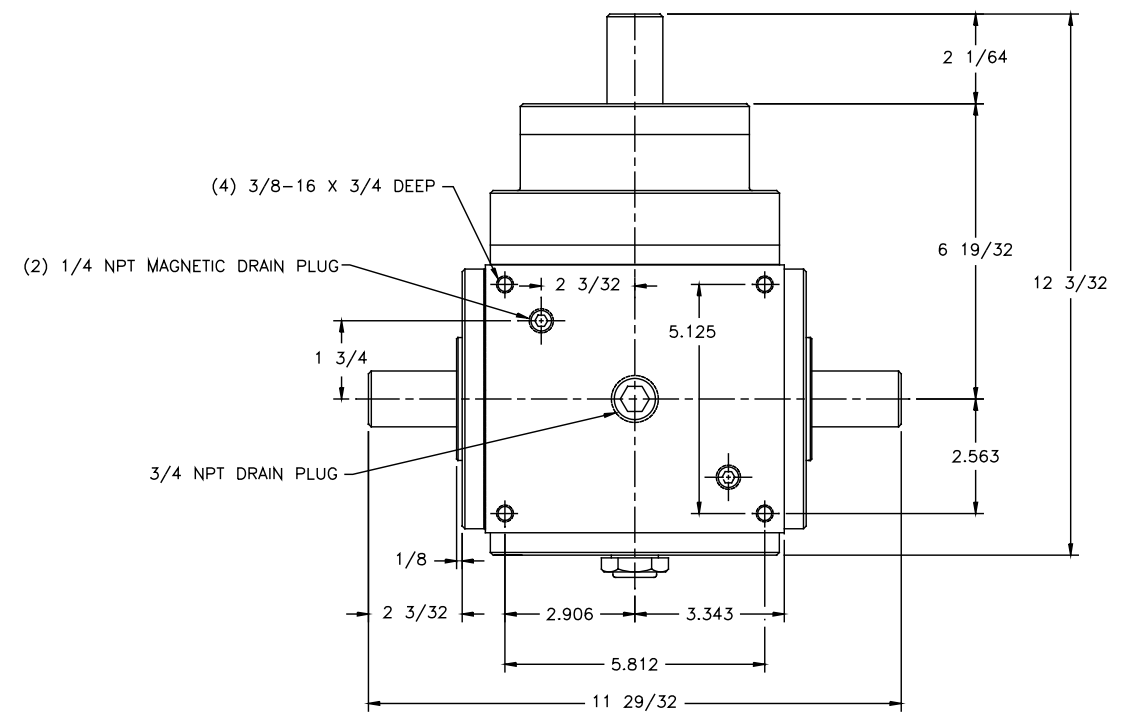
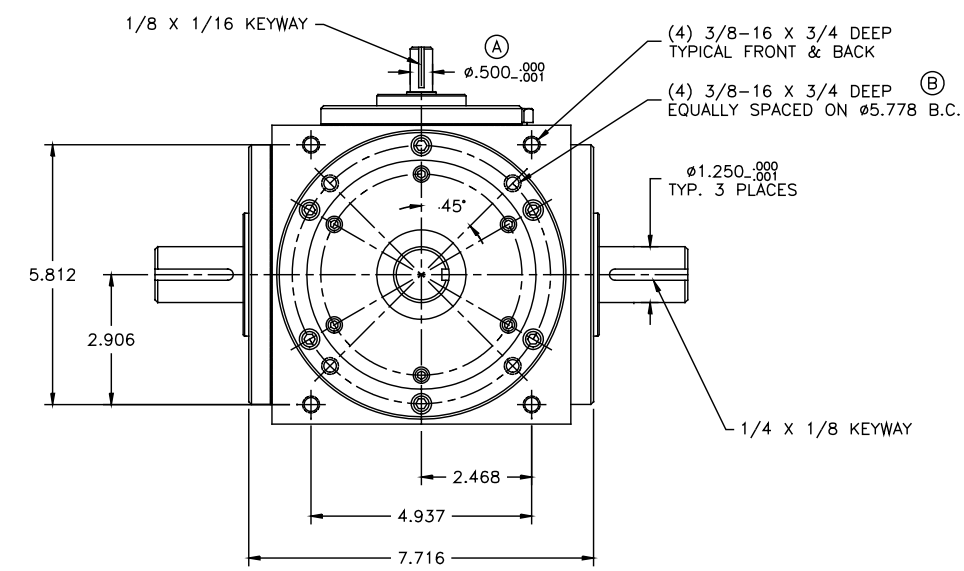


TOP VIEW

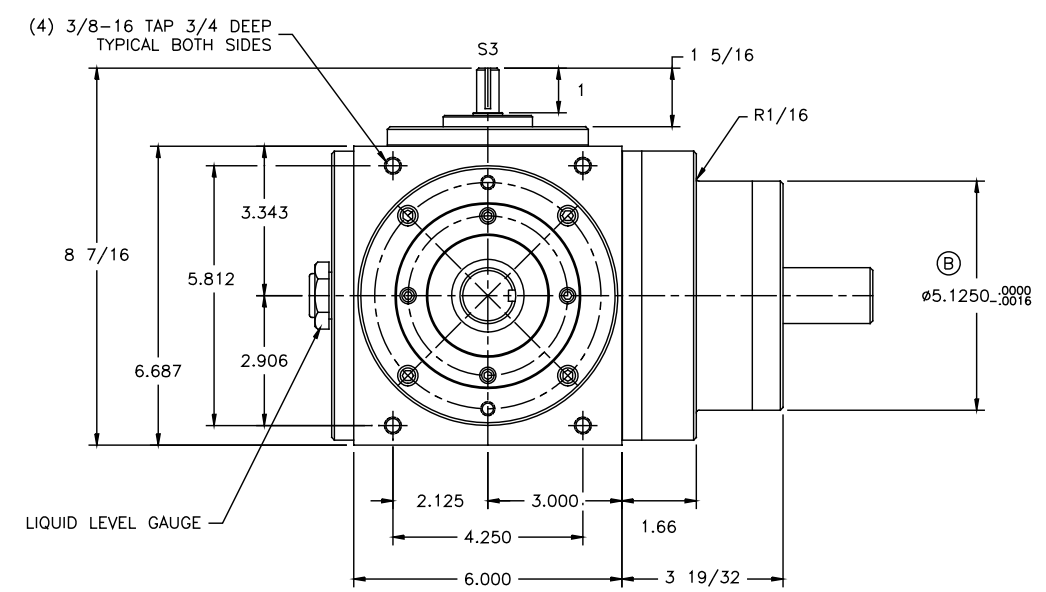


BOTTOM VIEW

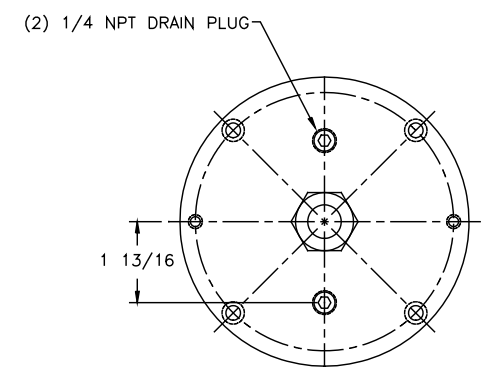
- NOTE:
- LUBRICATION:
 - TYPE: MOBILGEAR 627 (OR EQUIVALENT)
 - CAPACITY: 50 OZ.
 - CHANGE: FIRST @ 150 HR.
 - INTERVAL: SUBSEQUENT @ 2000 HR. (NORMAL OPERATING CONDITIONS)
 - OPERATING TEMPERATURE: 200°F MAX.
 - WEIGHT: 78 lbs.
 - S3 TO S2 RATIO: 80:1
 - S1 TO S2 RATIOS: 1:1, 2:1
 - RATED TORQUE @ THRU SHAFT SPEED:
 - 560 lb-in @ 2000 RPM
 - 620 lb-in @ 1750 RPM
 - 750 lb-in @ 1000 RPM
 - MAX. E-STOP TORQUE = 1350 lb-in



FRONT VIEW



SIDE VIEW



BACK COVER

RATIO	PINION	PART NUMBER
1:1	RIGHT	500RD1:1S02RA1
2:1	RIGHT	500RD2:1S02RA1
1:1	LEFT	500RD1:1S02LA1
2:1	LEFT	500RD2:1S02LA1

UNLESS OTHERWISE SPECIFIED				DATE: 10/05/97	CONIC SYSTEMS, INC. <small>HARMONIC DIFFERENTIALS & CONTROL SYSTEMS</small> <small>Eleven Rebel Lane, Port Jervis N.Y. 12771</small>		
DO NOT SCALE DRAWING				DATE: 10/05/97			
BREAK ALL SHARP EDGES				DATE: 10/05/97	ASM/PART DESCRIPTION: INSTALLATION: MODEL 500 RIGHT ANGLE STANDARD		
DIMENSIONS:				TOL.	MM	INCHES	MATERIAL:
.X				±	—	±.015	REPLACES: 500-080-RA-1S02 500-080R?S02?A
.XX				±	—	±.010	
.XXX				±	—	±.005	
INCHES				FRACTIONAL	±	1/32	FINISH:
ANGULAR				±	1/2°		SIZE: SCALE: 1:2
REVISIONS				DATE	CHANGE	CHNG	APPR
C	08/02/00	DRAIN/FILL PLUGS CHANGED	JA				
B	04/28/98	3/8-16 TAPS ADDED, DIM WAS 5.118	JA				
A	03/12/98	SHAFT WAS #438	JA				
SYM	DATE	CHANGE	CHNG	APPR			