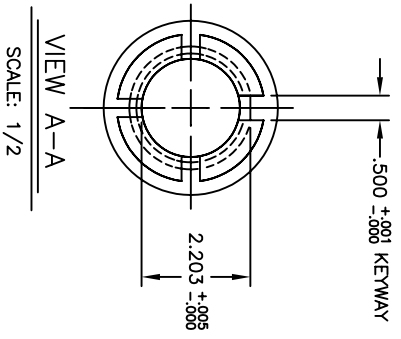


(6X) 5/16-18UNC-2B X .63 DEEP
EQUALLY SPACED ON $\phi 5.625$ BC

(4X) 1/4-20UNC-2B X .50 DEEP
EQUALLY SPACED ON $\phi 1.812$ BC



UNLESS OTHERWISE SPECIFIED		FINISH: EN	DATE: 08/02/96
DO NOT SCALE DRAWING *		ORDER: V GENOVESE	DATE: 08/02/96
* BREAK ALL SHARP EDGES *		APPROVED BY:	
DIMENSIONS	TOL.	MM	INCHES
X	\pm	\pm	\pm
XXX	\pm	\pm	\pm
INCHES	FRACTIONAL	\pm	DECIMAL
MM	ANGULAR	\pm	FINISH:
FINISH	TEMP. TREAT.		
CONIC SYSTEMS, INC		ASST. PART: 40-XXX-SM	
INDUSTRIAL ENTERPRISES & CONIC SYSTEMS		REPLICES:	
Eaton Rebel Lane, Port Jervis N.Y. 12771		SIZE: SCALE: DIM: IM40001-C	
MODEL 40-SM		BORE = $\phi 2.000$	
BORING = $\phi 2.000$		REV:	
STW	DATE	CHANGE	CHNG APPR
		REVISIONS	