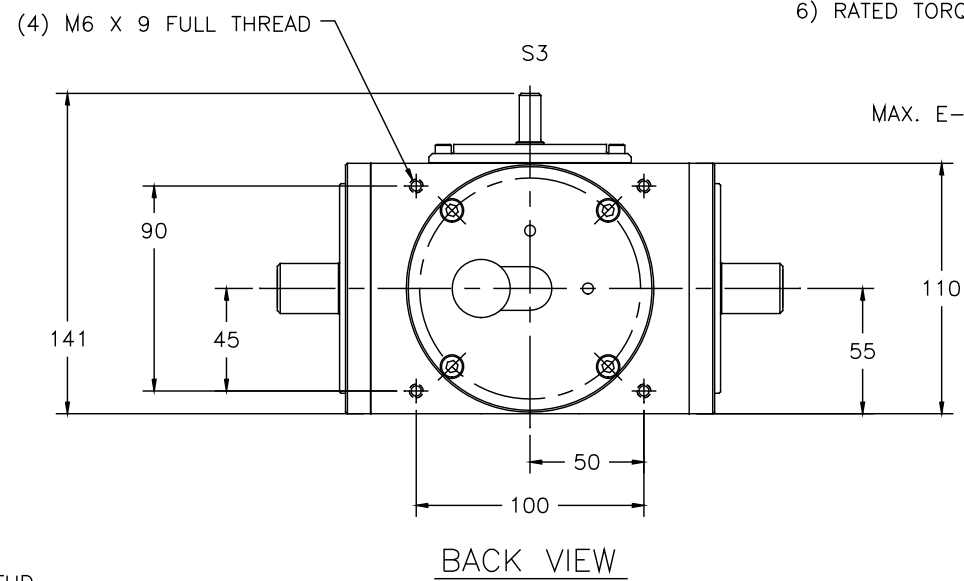
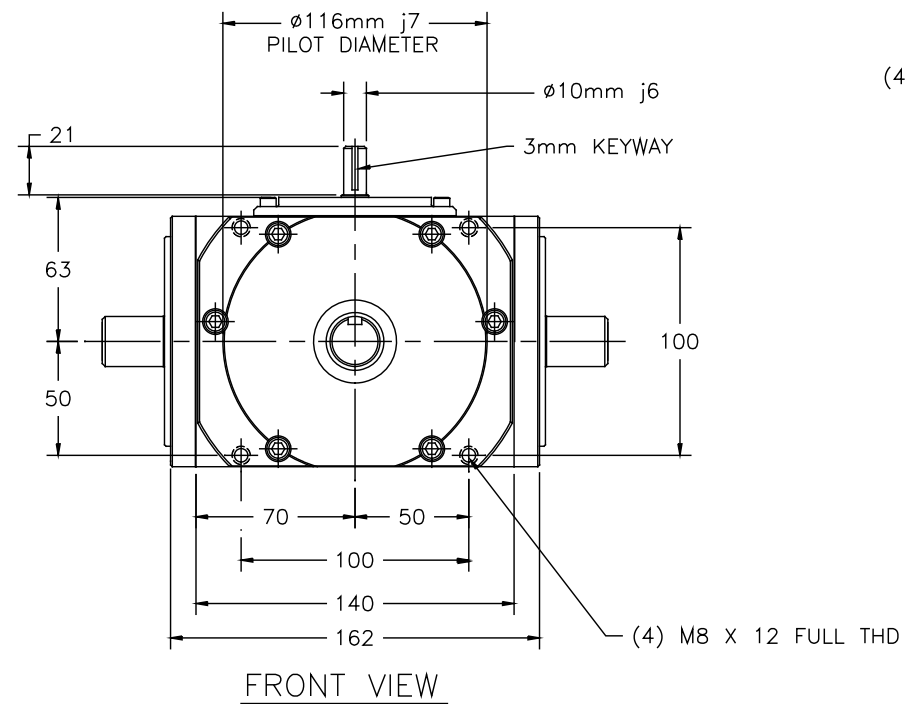


- NOTE:
- 1) LUBRICATION:
    - TYPE: MOBILGEAR 627 (OR EQUIVALENT)
    - CAPACITY: 580 mL
    - CHANGE INTERVAL: FIRST @ 150 HR. SUBS. @ 2000 HR.
  - 2) OPERATING TEMPERATURE: 93°C MAX.
  - 3) WEIGHT: 20 kg
  - 4) S3 TO S2 RATIO: 80:1
  - 5) S1 TO S2 RATIOS: 1:1, 2:1
  - 6) RATED TORQUE @ THRU SHAFT SPEED:
    - 34 Nm @ 2000 RPM
    - 42 Nm @ 1750 RPM
    - 50 Nm @ 1000 RPM
    - MAX. E-STOP TORQUE = 127 Nm



RATIO	SHIFTER ENGAGEMENT	PART NUMBER
S1:S2	MULTI-POSITION	300RD1:1M00SA1
1:1	SINGLE-POSITION	300RD1:1M00TA1

SYM	DATE	CHANGE	CHNG	APPR
REVISIONS				

UNLESS OTHERWISE SPECIFIED			DRAWN BY: J ARENDT		DATE: 03/07/00	
DO NOT SCALE DRAWING • BREAK ALL SHARP EDGES •			CHECK BY: J ARENDT		DATE: 03/07/00	
DIMENSIONS			APPROVED BY:		DATE:	
TOL.	MM	INCHES	MATERIAL:			
.X	± .030		FINISH:			
.XX	± .010		SIZE: SCALE: DWG: IM3C007-C			
.XXX	± .005		REPLACES: 300-080R1M00SA			
FRACTIONAL ±1/64			ASM/PART: 300RD1:1M00?A1			
ANGULAR ±1/2°			REV:			
THIRD ANGLE PROJECTION						

**CONIC SYSTEMS, INC**  
HARMONIC DIFFERENTIALS & CONTROL SYSTEMS  
Eleven Rebel Lane, Port Jervis N.Y. 12771

ASM/PART DESCRIPTION:  
MODEL 300MRAS  
METRIC SHIFTER

REPLACES: 300-080R1M00SA

ASM/PART: 300RD1:1M00?A1