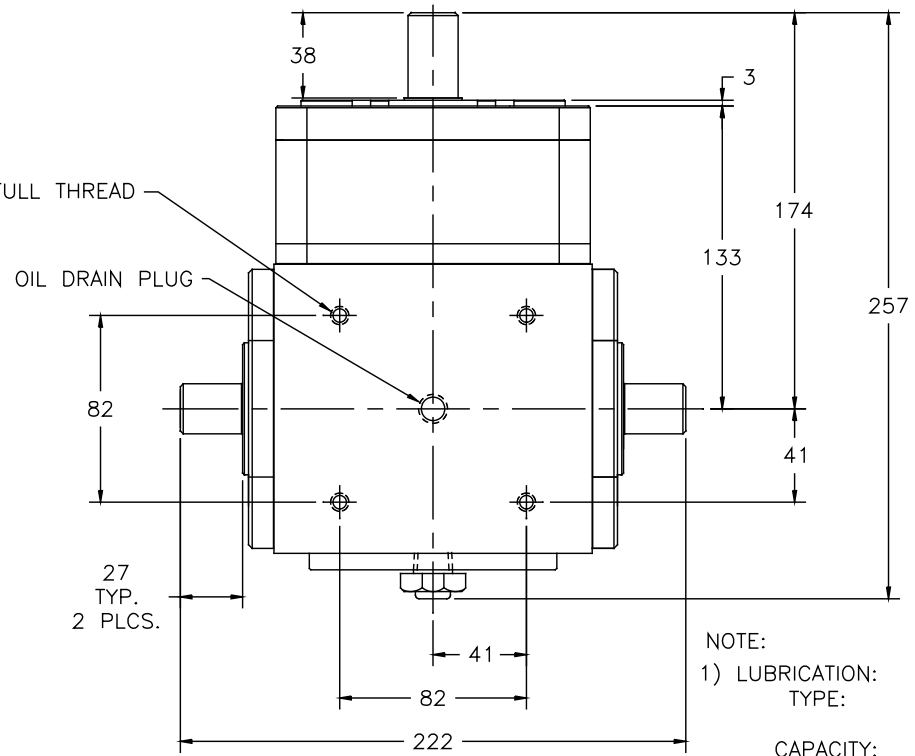


(4) M8 X 12 FULL THREAD

TOP VIEW

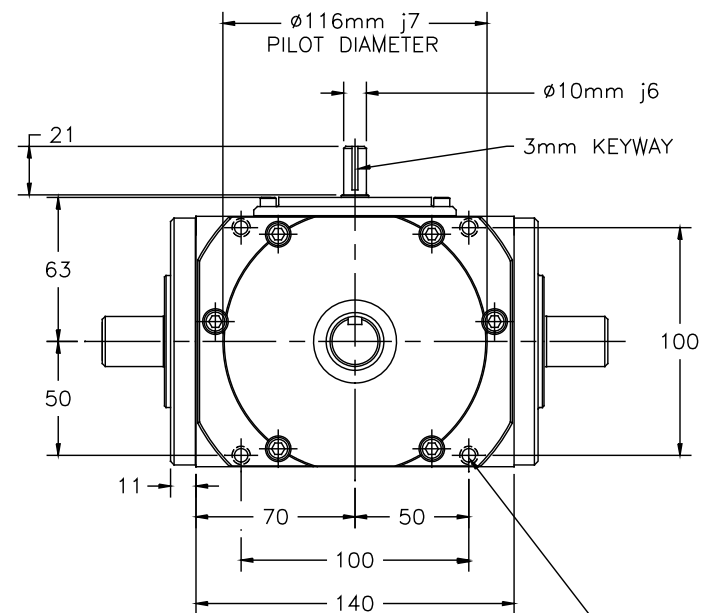
(4) M8 X 12 FULL THREAD



NOTE:
 1) LUBRICATION:
 TYPE: MOBILGEAR 627
 (OR EQUIVALENT)
 CAPACITY: 600 mL
 CHANGE: FIRST @ 150 HR.
 INTERVAL: SUBS. @ 2000 HR.

2) OPERATING TEMPERATURE: 93°C MAX.
 3) WEIGHT: 20 kg
 4) S3 TO S2 RATIO: 80:1
 5) S1 TO S2 RATIOS: 1:1, 2:1
 6) RATED TORQUE @ THRU SHAFT SPEED:
 34 Nm @ 2000 RPM
 42 Nm @ 1750 RPM
 50 Nm @ 1000 RPM
 MAX. E-STOP TORQUE = 127 Nm

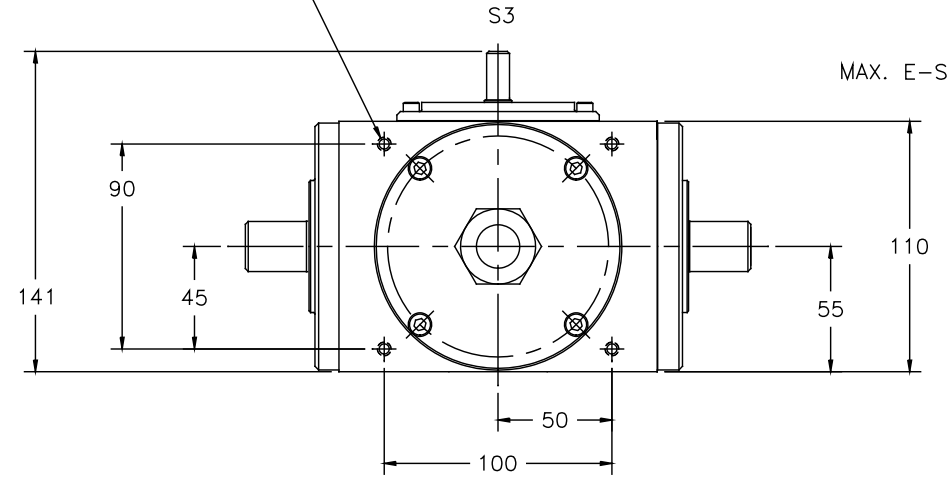
BOTTOM VIEW



(4) M8 X 12 FULL THD

FRONT VIEW

(4) M6 X 9 FULL THREAD



BACK VIEW

RATIO	PINION	PART NUMBER
S1:S2	RIGHT	300RD1:1M00RA1
1:1	RIGHT	300RD2:1M00RA1
2:1	RIGHT	300RD2:1M00RA1
1:1	LEFT	300RD1:1M00LA1
2:1	LEFT	300RD2:1M00LA1

SYM	DATE	CHANGE	CHNG	APPR
REVISIONS				

UNLESS OTHERWISE SPECIFIED		
DO NOT SCALE DRAWING • BREAK ALL SHARP EDGES •		
DIMENSIONS	TOL.	MM INCHES
.X	±	±.030
.XX	±	±.010
.XXX	±	±.005
INCHES	FRACTIONAL	±1/64
	ANGULAR	±1/2°
FINISH	THIRD ANGLE PROJECTION	

DRAWN BY:		DATE:	CONIC SYSTEMS, INC	
J ARENDT		10/15/97	HARMONIC DIFFERENTIALS & CONTROL SYSTEMS Eleven Rebel Lane, Port Jervis N.Y. 12771	
CHECK BY:		DATE:	ASM/PART DESCRIPTION:	
J ARENDT		10/15/97	MODEL 300MRA	
APPROVED BY:		DATE:	METRIC	
			REPLACES:	ASM/PART:
			300-080R?M00?A	300RD?:?M00?A1
SIZE:	SCALE:	DWG:	REV:	
C	1:2	IM3C002-C		