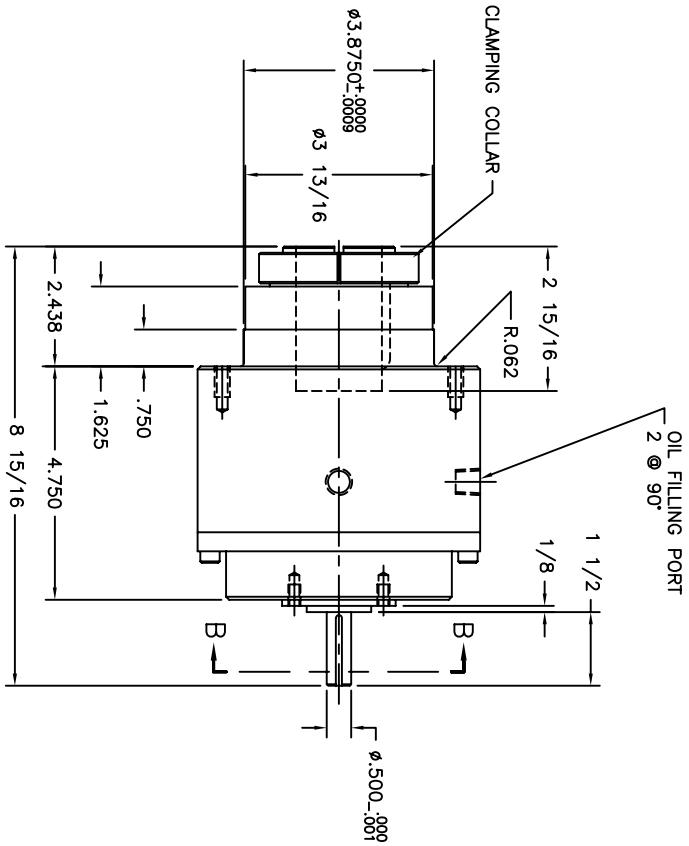
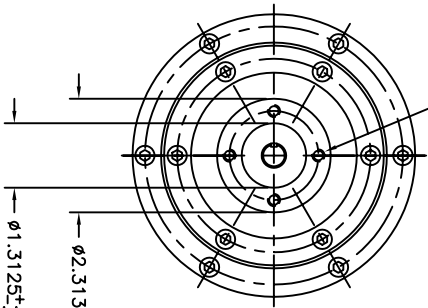


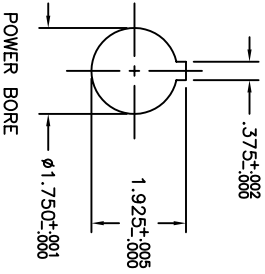
(6) 5/16-18 X 5/8 DEEP  
EQUALLY SPACED ON A Ø4.750 B.C.



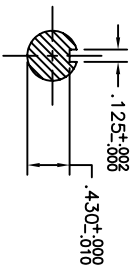
OIL FILLING PORT  
2 @ 90°



(4) 1/4-20 X 7/16 DEEP  
EQUALLY SPACED ON Ø1.813 B.C.



POWER BORE



SECTION B-B  
SCALE = 1:1

STW	DATE	CHANGE	CHKG	APPR
		REVISIONS		

UNLESS OTHERWISE SPECIFIED		INCHES		MATERIAL	
DO NOT SCALE DRAWING					
* BREAK ALL SHARP EDGES *					
DIMENSIONS		TOL.	MM	INCHES	APPROVED BY
MM	Ø	XXX	±	±.010	DATE
INCHES	Ø	FRACTIONAL	±	±.005	
		ANGULAR	±1/2°	FINISH:	
FINISH		Ø			
DATE		05/10/94	DESIGN BY		JAC
DATE		10/02/97	CHECK BY		J ARENDT
DATE			DATE		
<b>CONIC SYSTEMS, INC</b> <small>HERNANDO INTERNATIONAL &amp; CONIC SYSTEMS</small> <small>Eleven Rebel Lane, Port Jervis N.Y. 12771</small>					
<b>ASST/PART DESCRIPTION:</b> MODEL 32-SM; INSTALLATION SHAFT MOUNT, BORE=Ø1 3/4					
REPLACES:		32-SM	ASST/PART:		32-XXX-SM
SIZE:	SCALE:	DWG:	REV:		
C	1:2	IM32000-C			